

  
**PROMINENCE**  
ESTATES



**RESIDENTIAL**  
PROPERTY EXPERTS

COVENTRY, WARWICKSHIRE  
& LEAMINGTON SPA

**LARCHWOOD ROAD,**  
EXHALL, CV7 9GD

**£1,000 PER CALENDAR**

# LARCHWOOD ROAD



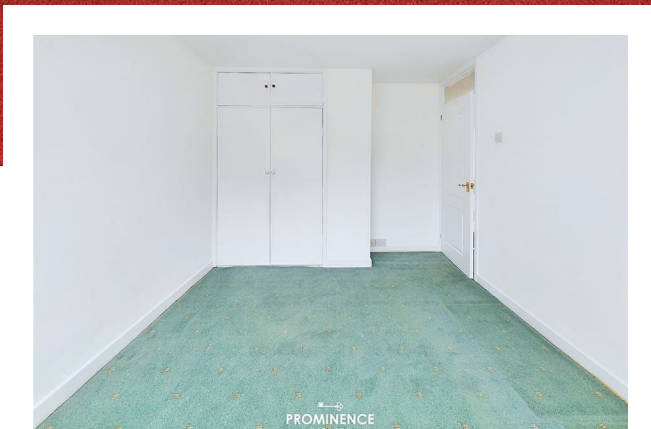
# PROMINENCE

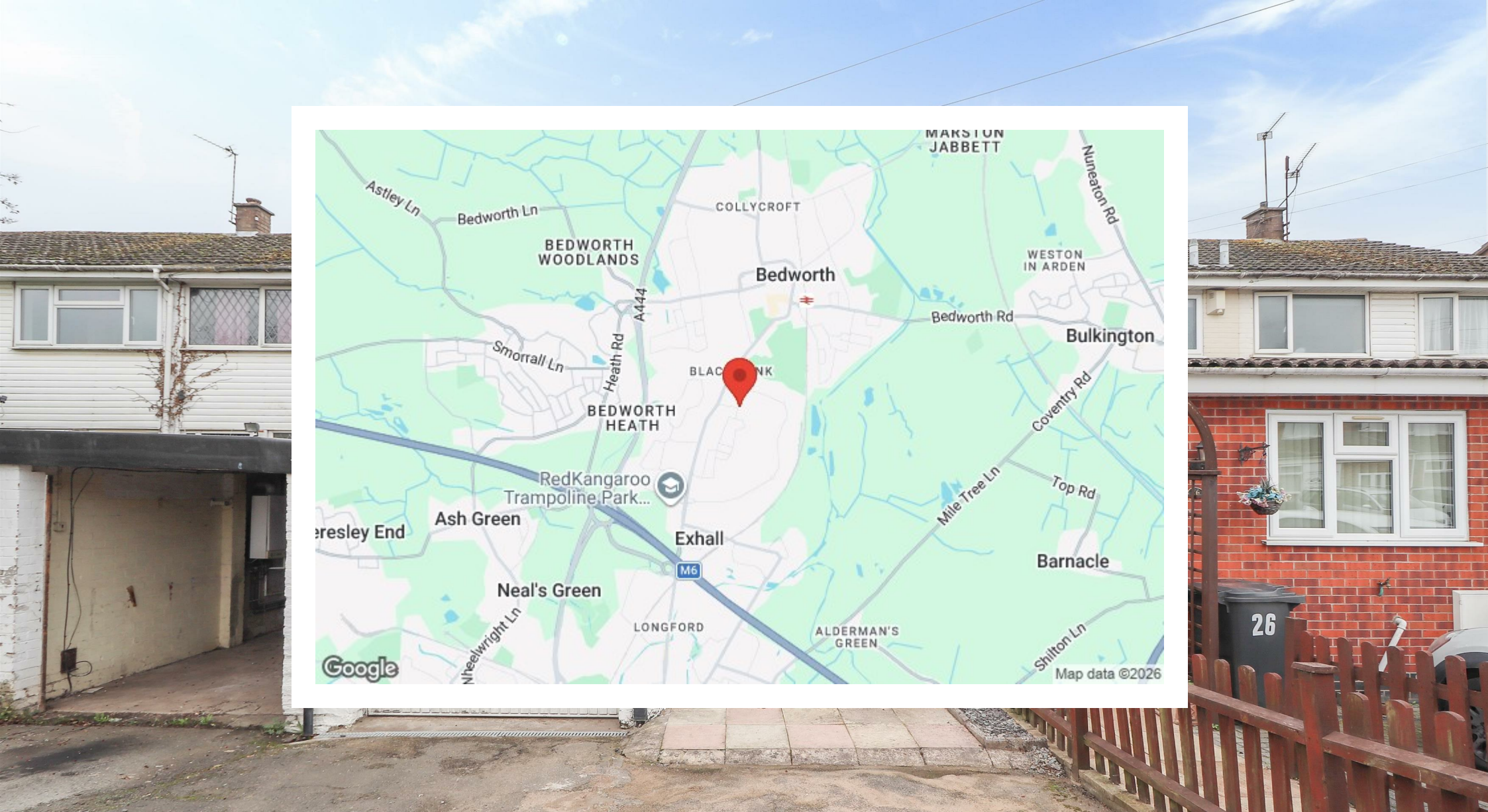
ESTATES

This spacious 3-bedroom home, set in a peaceful location, offers a perfect blend of comfort and convenience. The property features ample living space with well-proportioned rooms, ideal for families or those looking to enjoy extra space. Two bedroom's come with built-in wardrobes, providing plenty of storage. The house includes driveway parking, ensuring easy access and secure parking. Outside, a low-maintenance garden offers a large outdoor space without the hassle of upkeep. Available unfurnished, this home is ready for you to make your own.

To arrange a viewing please call Prominence Estates on 02476309826







Prominence Estates  
5 Queen Isabels Avenue,  
Cheylesmore,  
Coventry,  
CV3 5GE

02476 309 826  
lettings@prominenceestates.com  
www.prominenceestates.com

  
**PROMINENCE**  
ESTATES